

**PAESSLER**  
**PRTG**   
**NETWORK**  
**MONITOR**

Simplify your day and monitor  
your entire IT infrastructure

Monitor. Visualize. Relax.  
And stay ahead of IT infrastructure issues.



### One solution for everything

View your entire network, your systems, and your applications in a single, comprehensive solution.

- Performance and availability
- Hardware and applications
- Cloud and virtual environments
- Databases, email, web, storage, printers, etc
- Medical devices, industrial environments and much more
- Monitor multiple locations with a single license

### Smart and simple monitoring

You'll be up and running within minutes, without frustrating, complicated configuration

- Smart setup and auto-discovery for a quick start
- Predefined monitoring for most common devices
- Comprehensive and user-friendly alerts and notifications
- Detailed statistics of all devices

### Customize your monitoring

Adjust your PRTG Network Monitor to your individual requirements

- Fully featured API and custom sensors for simple integration of custom devices and applications
- Create multi-layer custom dashboards and maps for a high-level overview
- Access PRTG as you like: browser, PRTG Desktop app for Windows, macOS and Linux, or mobile apps for iOS and Android
- PRTG Desktop with bird's eye dashboard of multiple servers
- Many customizable notification types

# Ensure that all business-critical components of your IT infrastructure always run smoothly.



"Insurance is a 24-hour business and we can't afford to have our data centres and applications down when our customers need help. Our technology is absolutely business-critical."

Suresh Lakshmikanthan,  
IT system Administrator, AXA Gulf

"PRTG helps us do a better job than our competitors because we are able to monitor critical networks and react quickly before an issue spins out of control."

Ethan Quint, Clair Global

"With Solarwinds, Cacti and SNMPC we needed three different monitoring systems (...) Finding out that PRTG was able to replace all three tools was a huge additional benefit for us and helps us to save a lot of time and money."

Stein Erik Høybakk,  
Senior Network Engineer at TAFJORD

"We start managing the existing infrastructure to determine bottlenecks. Sometimes it is CPU, I/O or code-based problems. By using PRTG, we can save them from making bad decisions, saving headaches, time and money."

Jon Berry, President and Owner  
Green Olive Tree

"The challenge for large organizations is to successfully monitor tens of thousands of elements in real time, and ensure that they are performing well, without drowning in a flood of information. (...) PRTG "oversees" other monitoring solutions from the global level to the most granular. It's a real help in our ongoing quest for simplification."

Guillaume Baudry, Network Architect  
at ENGIE Solutions

"A network without monitoring is like driving a car that's never had a vehicle inspection. Tire pressure, brakes or the engine can all have problems, but without any checks, they might not be noticed before it's too late."

Kevin Joos, IT/OT Project Engineer  
at Process Automation Solutions

## Fair and simple licensing

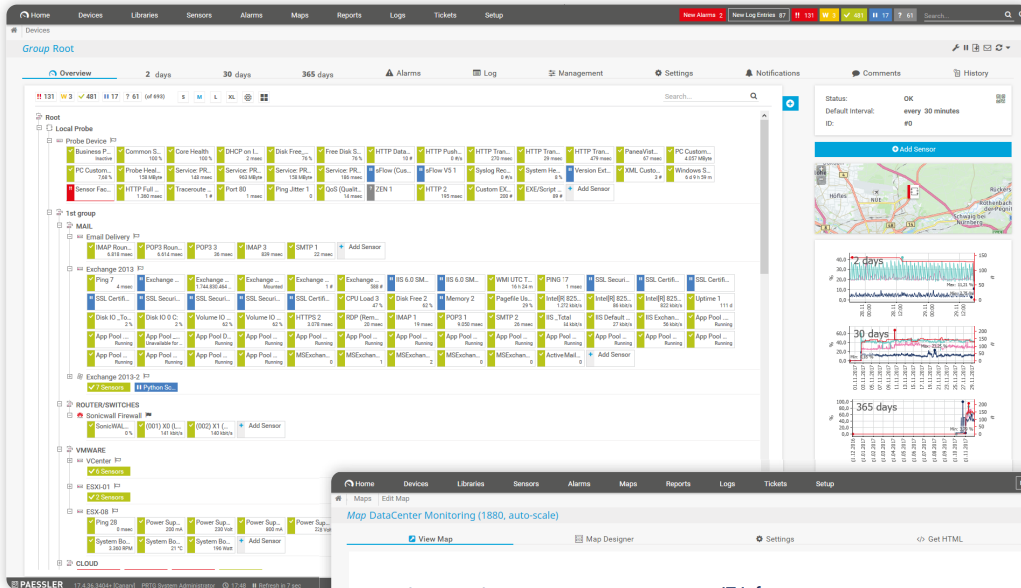
PRTG has a clear, straightforward licensing structure and its pricing is optimized for networks of any size.

- All features for IT monitoring included in every license
- Multi-location monitoring and failover cluster included
- Fair upgrade model – just pay the price difference
- Choose between perpetual on-premises license, cloud hosted offer or subscription-based enterprise version

<p><b>PRTG 500</b> Start small, upgrade later</p> <p>500 sensors 1 server installation Perpetual license</p>	<p><b>PRTG 1000</b> Small &amp; medium environments</p> <p>1,000 sensors 1 server installation Perpetual license</p>	<p><b>PRTG 2500</b> Medium-sized environments</p> <p>2,500 sensors 1 server installation Perpetual license</p>
<p><b>PRTG 5000</b> Large environments</p> <p>5,000 sensors 1 server installation Perpetual license</p>	<p><b>PRTG XL1</b> Very large environments</p> <p>Recommended for use around 10,000 sensors 1 server installation Perpetual license</p>	<p><b>PRTG Enterprise Monitor</b></p> <p>Unlimited sensors Unlimited server installations Subscription license</p>

See our prices online: [www.paessler.com/prices](http://www.paessler.com/prices)

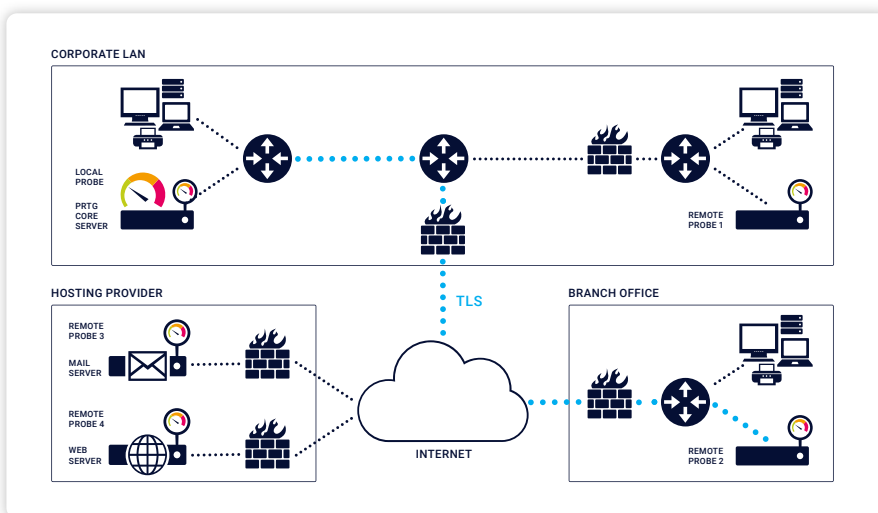
# Monitor everything. And be in full control of your network and its performance.



**Integrated technologies**  
PRTG monitors your entire IT infrastructure. All important technologies are supported.



**Maps and dashboards**  
Visualize your network using real-time maps with live status information.



**Remote probes**  
Monitoring a distributed network.

# Feature overview

## Simple and effortless monitoring

- Agentless monitoring for Windows, Linux, and macOS
- Integrated database, mail server, and web server
- Auto-discovery – immediate visualization of discovered devices
- Preconfigured templates for common devices and applications
- Automatic software updates
- Simple and fair licensing model including an easy upgrade path

## Flexible and reliable alerts

- Alerts for individually configured criteria
- Various notification methods (email, SMS, Slack, HTTP request, Microsoft Teams, push notifications, exe, script, syslog, etc.)
- Scheduled and customizable reports (HTML, PDF)
- Detailed log files about all activities
- Internal ticket system

## One solution for everything

- Support for all common standards (SNMP, ICMP, WMI, HTTP, SSH, REST, OPC UA, etc.)
- Protocols for medical, industrial and IoT environments like DICOM, HL7, MQTT, Modbus, etc.
- Support for NetFlow and IPFIX, sFlow, jFlow and packet sniffing
- Monitoring of hardware, software, virtual environments, and applications
- Out-of-the-box support for leading IT vendors (Cisco, VMware, AWS Amazon Web Services, Microsoft, NetApp, Oracle, Nutanix, HPE, Dell, Juniper, APC, Fujitsu, etc.)
- Flexible and easy import of MIB data files of all vendors
- RESTful API and custom sensors for monitoring non-standard devices and applications
- Event log monitoring
- Monitoring of multiple sites with one license
- Available interface languages: English, German, Spanish, French, Portuguese, Dutch, Russian, Japanese, and Simplified Chinese

## Data publication

- Drag & drop map editor for individualized dashboards
- Integrated reporting engine with delivery as HTML, PDF, or CSV
- Fully featured API (Access monitoring data and manipulate monitoring objects using HTTP requests)
- Free apps for iOS and Android
- Powerful interactive web interface
- PRTG Desktop app for viewing multiple PRTG installations in one dashboard

## Software architecture

- Designed for networks of all sizes
- Integrated database optimized for monitoring data (no database server required)
- Historic monitoring data stored in original intervals (raw data, not summarized)
- Failover cluster functionality included

## Support

- 1st level in-house support by network experts and developers
- Free support area with manuals, knowledge base, PRTG Sensor Hub, video tutorials and webinars
- Experienced consulting team for large projects
- Worldwide network of qualified implementation partners

## Licensing and system requirements

- 100 sensor license with all features for free
- 30 days unlimited trial version
- All features for IT monitoring included in every license
- Upgrade to higher licenses by only paying the price difference
- Runs on all current Microsoft Windows versions
- Runs with current versions of common browsers for the PRTG web interface
- Runs on physical, virtual, and cloud environments such as VMware, Microsoft Hyper-V, AWS, Microsoft Azure, Google Cloud Platform, etc.

## Supported vendors and applications



**CONTACT US AND GET YOUR FREE FULLY FEATURED 30 DAY TRIAL!**

## ABOUT PAESSLER AG

Paessler believes monitoring plays a vital part in reducing humankind's consumption of resources. Monitoring data helps its customers save resources, from optimizing their IT, OT and IoT infrastructures to reducing energy consumption or emissions – for our future and our environment. That is why Paessler offers monitoring solutions for businesses across all industries and all sizes, from SMB to large enterprises. Paessler works with renowned partners, and together they tackle the monitoring challenges of an ever-changing world.

Since 1997, when Paessler first introduced PRTG Network Monitor, it has combined its in-depth monitoring knowledge with an innovative spirit. Today, more than 500,000 users in over 170 countries rely on PRTG and other Paessler solutions to monitor their complex IT, OT and IoT infrastructures. Paessler's products empower its customers to monitor everything, and thus help them optimize their resources.

Check out all the possibilities within the Paessler Solutions Universe



HEALTHCARE



MANUFACTURING



EDUCATION



FINANCE



GOVERNMENT



CCTV



MANY MORE