

# Remote Session Management at Enterprise Scale

## Monitor, record and control privileged sessions.

As IT groups scale their efforts across larger networks, new cloud services, various connection protocols, numerous privileged users, different business groups and customer environments, they need to closely monitor privileged accounts across sessions. Teams must navigate complex networks, cloud services, and user needs. With multiple sessions active at once, using different connection protocols and a variety of privileged accounts, managing and securing them is a challenge. Connection Manager is an advanced remote connection management solution that provides one place to manage and interact with multiple remote sessions.

### Maximize Productivity

Support use of specific protocols, tools and user interfaces for multiple sessions

Launch new sessions in a separate tab for better visibility

Quickly switch between sessions

Available for Windows and MacOS

### Secure Credentials

Inject credentials automatically into sessions from Secret Server

Minimize privilege escalation and third party privileged account misuse

Reduce improper access due to administrative errors

### Centralize Control

Tight integration with Secret Server provides secure access to privileged credentials

Support for workflow actions are accessible in a single location

Improve accountability and oversight over privileged users

### Monitor and Audit

Capture every action taken in your audit log to prove regulatory compliance

Enable session recording

Meet regulations including SOX, HIPAA, ICS CERT, GLBA, PCI DSS, FDCC, FISMA, among others

## Connection Manager Benefits



### Improve Security

Improve oversight over all privileged sessions and users



### Unburden IT Teams

Centralize control of sessions to reduce confusion and enhance usability



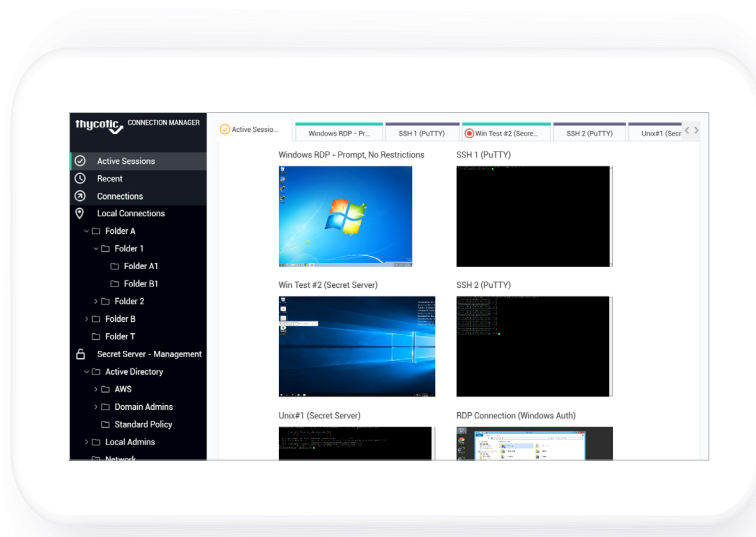
### Scale your PAM

Gain visibility across hundreds of different connections in a single location

## Connection Manager scales across hundreds of connections through a single interface to improve productivity, strengthen security and tighten compliance.

Connection Manager provides a unified environment to manage and interact with multiple remote sessions for both Remote Desktop Protocol (RDP) and SSH. Credentials, session recording, multifactor authentication and secrets access workflows can now be accessed in a single location and includes:

- Single interface with multiple remote sessions
- Standard RDP and SSH controls
- Session management feature for Secret Server and ad-hoc sessions
- Credentials from secrets and support for workflow actions
- Multiple authentication methods
- Connections to multiple environments
- Search to look for secrets or connection names



### Streamline Control over Sessions

Connection Manager saves you time and lowers your privileged user risk

**Remote Access:** Launch and configure sessions across multiple environments

**Session Management:** Automatically inject credentials into sessions

**Centralized Control:** Access a single interface to manage and interact with sessions.

**Session Recording:** Create an end to end record of privileged user access

**Tracking and Auditing:** Provide an audit trail to demonstrate compliance

### Why Connection Manager

Rapid deployment to start. Elastic scalability to grow.

Easy access to privileged credentials from the Secret Server vault on-premises or in the cloud.

Monitor, record and control simultaneous remote sessions - from a single interface.

**Try Connection Manager for Free at [thycotic.com](https://thycotic.com)**

Thycotic is focused on the most vulnerable attack vector – privilege. With Thycotic you can adopt a multi-layered approach that covers your privilege security needs from endpoints to credentials, ensuring protection at every step of an attacker’s chain.